

# NJ's State Wildlife Action Plan (SWAP) Update



November 22, 2024

Prepared for F&W and ENSAC

Kim Korth

SWAP Coordinator | Planner

# SPECIES OF GREATEST CONSERVATION NEED

Distribution & abundance of native species to determine “at-risk species” (SGCN)

## Progress: Final Touches!

- NJ’s list of all native animal species were pre-screened using our updated criteria and source database (1,254 total).
- **All SGCN have been associated with habitats and regions**
  - F&W and NHP staff are now doing fatal flaw review for errors. Corrections due by: 12/20/24
- **TOTAL SGCN**
  - 613 animal species and 128 plant & fungi species are on our list (741 total).
    - Regulated SGCN: 221 animal and 87 plant species (308 total)
    - SGCN: 265 animal and 18 plant species (283)
    - Data Deficient SGCN: 127 animal and 23 plant species (150 total)



**SPECIES PROFILES**—In Progress. All E, T, SC species will have species profiles  
Includes a picture and range map. Completed by February 1, 2025



## Arrowhead Spiketail

### Legend

 Range

Disclaimer: This is not an official map, but for reference use only. The data was compiled from the best sources available, so various errors from sources may be inherent on the map. All boundaries and features therein should be treated as such. This map is a representation of ground features and is not a legal document of their locations.

Atlantic Ocean

0 5 10 20 30 Miles

data.pa.gov, New Jersey Office of GIS, Esri, TomTom, Garmin, FAO, NOAA, USGS, EPA, NPS, USFWS

## Eastern Copperhead

### Legend

 Range

Disclaimer: This is not an official map, but for reference use only. The data was compiled from the best sources available, so various errors from sources may be inherent on the map. All boundaries and features therein should be treated as such. This map is a representation of ground features and is not a legal document of their locations.

PENNSYLVANIA

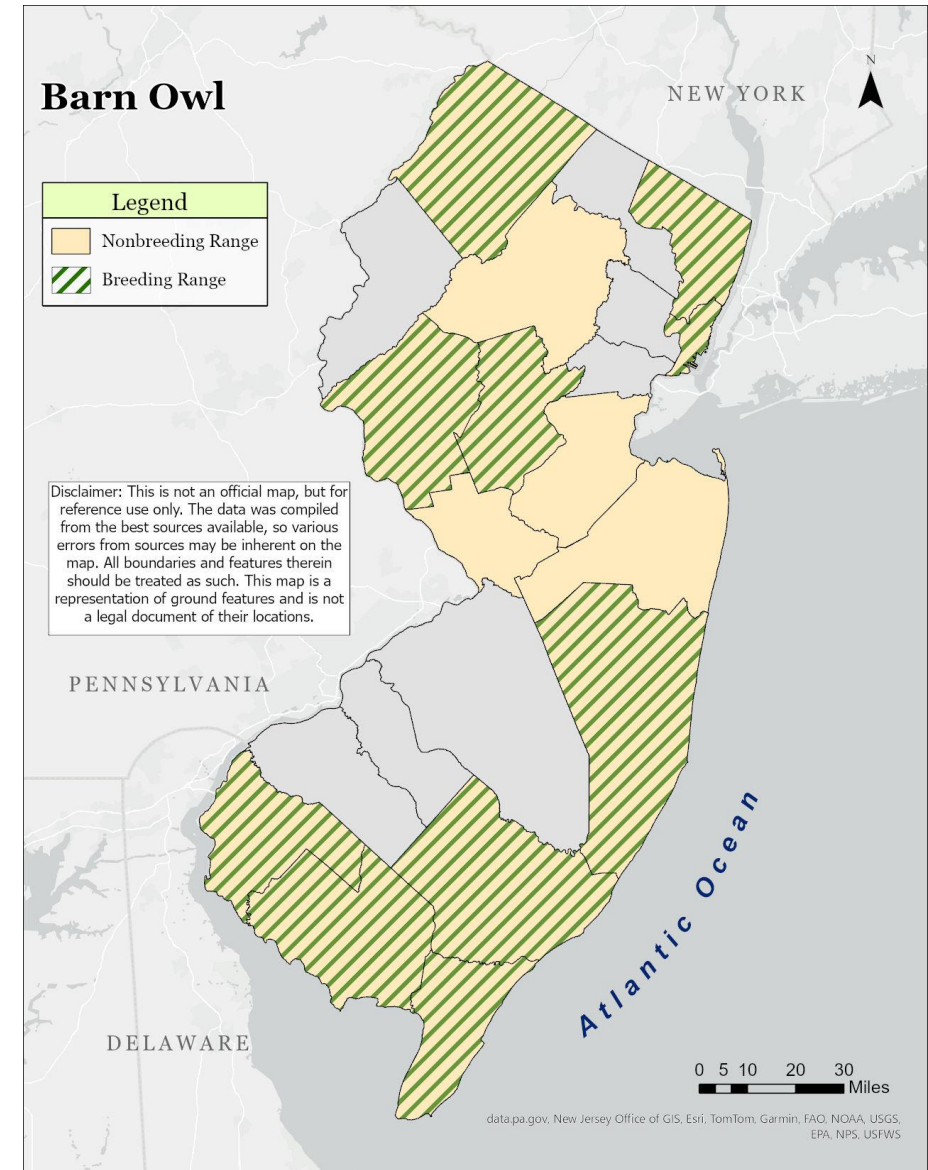
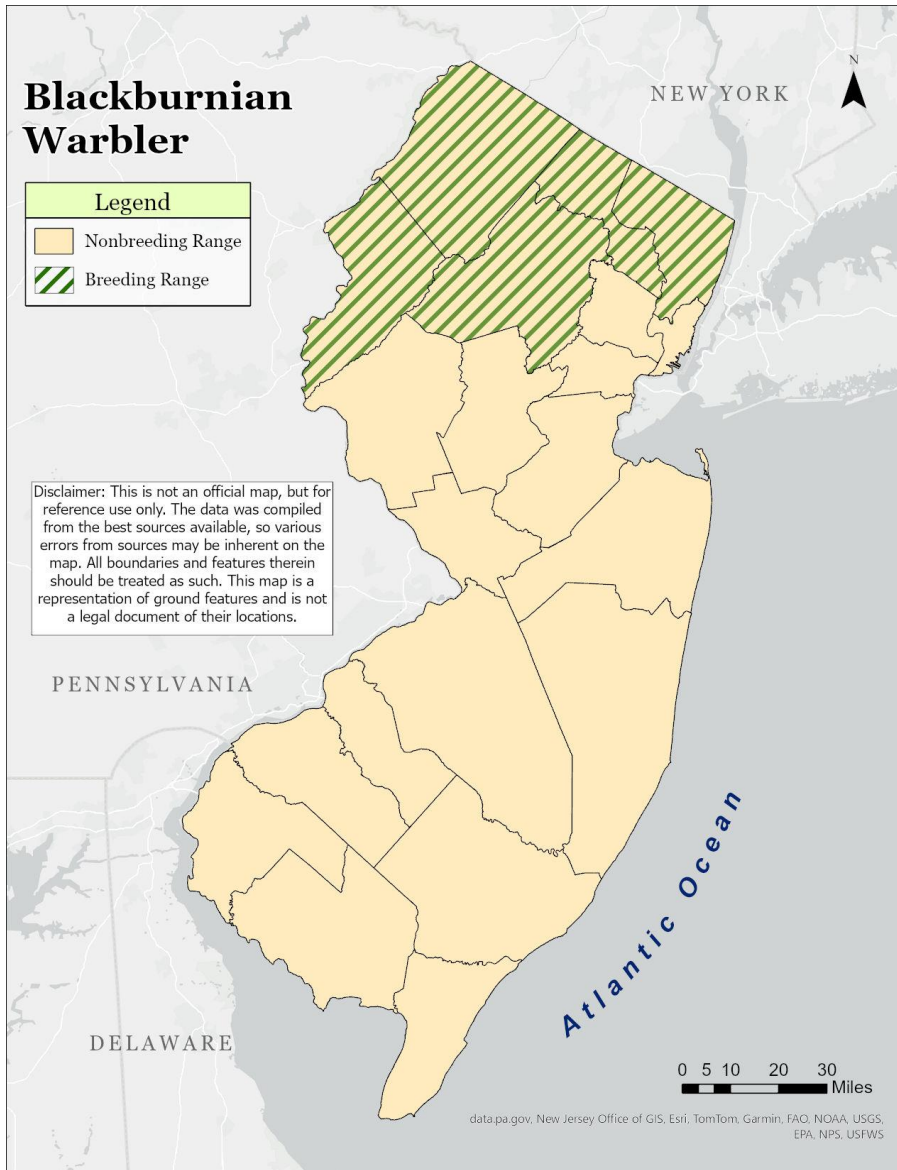
DELAWARE

Atlantic Ocean

0 5 10 20 30 Miles

data.pa.gov, New Jersey Office of GIS, Esri, TomTom, Garmin, FAO, NOAA, USGS, EPA, NPS, USFWS





# Habitats

Descriptions, locations & relative conditions of key habitats essential to SGCN conservation.

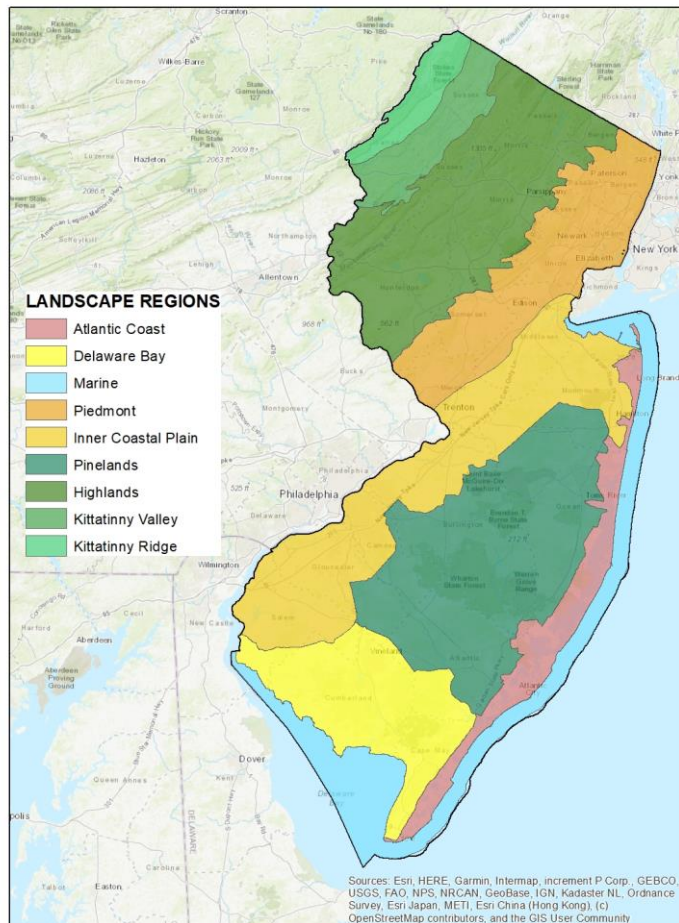
Progress: Nearly complete (completed by March 2025)

➤ Habitats are the foundation of 2025.

- 9 Regions: Marine, Atlantic Coast, Del Bay, Pinelands, Inner Coastal Plain, Piedmont, Highlands, Kittatinny Valley, Kittatinny Ridge
- Urban is an un-mapped region.

➤ 19 Broad Habitat Types—species are linked/associated with habitats and regions.

➤ Using Conservation Blueprint (Rowan) and CHANJ (F&W) mapping to create static maps identifying locations & relative conditions of key habitats essential to SGCN conservation. Mapping complete by March 1, 2025



# Dynamic, data driven, integrated website!

Goal to increase engagement and implementation

## Progress: Ongoing

OIT, I&E, with DJ Case assisting, are creating a SWAP website that is engaging and drives users to take action. Website will live on the DEP platform.

WORKING: DJ Case will run scenarios to ensure searches provide sufficient Conservation Actions to users and test the wire-frame structure for seamless data integration within the web site.

- Allow users to refine query by filtering and sorting data. Based on similar approach being designed for the NE SWAP database.
- GOAL to share designs and the pilot test at next ENSAC meeting

CONSIDERING: Submitting a SWAP Enhancement Grant to create an Implementation & Communication Plan for 2026-2035. Grant Application is due February 2025.





# QUESTIONS?

